

Oracle Enterprise Command Centers (ECC) V16

Quick Start Guide

Announcement

Oracle is pleased to announce the availability of new and enhanced Enterprise Command Centers to help Oracle E-Business Suite users identify and act on priority transactions without custom operational reporting. The release includes 36 command centers comprising 165+ dashboards across Oracle E-Business Suite.

Watch EBS leaders announcing EBS R12.2.15 and ECC V16 and giving an overview of what's new in this release



Cliff Godwin - Senior Vice President of Applications Development

[Oracle E-Business Suite 12.2.15 Updates](#)



Muhannad Obeidat - Vice President of Software Development

[Enterprise Command Centers Empower EBS User Experience – Data Discovery Visualization](#)



[Announcing Oracle E-Business Suite 12.2.15](#)

Full set of documentation needed in your ECC journey



[Oracle E-Business Suite Release Readiness \(12.2.15\)](#)

[Oracle E-Business Suite Applications Technology What's New 12.2](#)

Oracle E-Business Suite Releases 12.1 and 12.2 Release Content Documents Doc: [KB203671](#)

Installing Oracle Enterprise Command Center Framework Doc: [KA980](#)

Oracle Enterprise Command Center Framework Globalization Guide Doc: [KA1483](#)

Enabling TLS for Oracle Enterprise Command Center Framework Doc: [KA1146](#)

Oracle Enterprise Command Center Framework High Availability Doc: [KB437088](#)

Oracle Enterprise Command Center - RBAC Alternative Approach Doc: [KB631200](#)

[Oracle E-Business Suite: Extending Enterprise Command Centers](#)

[Oracle E-Business Suite User's Guide: Enterprise Command Centers](#)

[Oracle E-Business Suite: Administering Enterprise Command Centers](#)

Quick Links

Installation

Documentation

Oracle Enterprise Command Centers (ECC) Quick Start Guide V16

Announcement

Tutorial videos direct from development and transfer of information sessions



- [Enterprise Command Centers: Direct from Development videos](#)
- [Enterprise Command Centers for E-Business Suite: Technical Details and Implementation](#)
- [Realizing the Value of ECC for Oracle E-Business Suite Financials](#)
- [Implement and Use - Install ECC Online Training](#)
- [Implement and Use - UI Components Online Training](#)

Quick Links

Hands-On Labs covers the latest version of ECC



- [From Installation to Personalizations](#)
- [From Personalization to Extensibility](#)

Installation

ECC image in the OCI Marketplace



- [ECC V14 OCI Marketplace Image \(V16 coming soon\)](#)

Documentation

Proactively identify missing patches, and more using ECC analyzer



- EBS Enterprise Command Center (ECC) Analyzer Doc: [KB168887](#)

ECC community provide access to experts that empower collaboration



- [Enterprise Command Center Framework Support Community - EBS \(MOSC\)](#)
- [Enterprise Command Center Framework - EBS Ideas](#)

Oracle Enterprise Command Centers (ECC) *Quick Start Guide* V16


Announcement



Quick Links







Installation

Documentation

All patches required for installing V16 release

 Enterprise Command Center			
Prerequisites		ECC Framework	ECC Adapter
R12.AD.C.Delta.17	R12.TXK.C.Delta.17	38792278	38792016

ATG						
 12.2.7	12.2.8	12.2.9	12.2.10	12.2.11	12.2.12	12.2.13
36962188	36962189	36962190	36962191	36962192	36962856	36962205
 12.2.14	12.2.15					
36962204	36962204					

Product Families Consolidated Patches		
 Financials 38767097 General Ledger, Receivables, iReceivables, Assets, Payables, Cash Management, iExpenses, Lease, and Finance Management	 Projects 37965038 Projects	 Procurement 37965045 iProcurement, Contract Life cycle Management, Procurement, iStore
 Supply Chain Management 37965052 Order Management, Inventory Management, Enterprise Asset Management, Channel Revenue Management, Discrete Manufacturing, Process Manufacturing, Outsourced Manufacturing, Cost Management, Depot Repair, Advanced Pricing, Project Manufacturing	 Customer Relationship Management 37965042 Service Contracts, Service, Incentive Compensation	
		 Human Resource Management 37965021 Human Resources, Payroll

Oracle Enterprise Command Centers (ECC) *Quick Start Guide* 16

Announcement

All product documentation and transfer of information (TOI) sessions

i Implement and use online training sessions cover the new and enhanced features in this release. To check the previous release sessions, visit [Oracle E-Business Suite Transfer of Information \(TOI\) Training](#) and search by command center name.

Quick Links

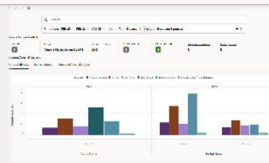
Installation

Documentation



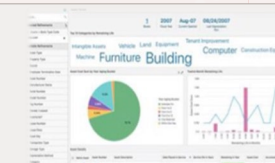
Oracle General Ledger Command Center

[What's New](#) | [Implement and Use Online Training](#) | [Implementation Guide](#) | [User Guide](#)



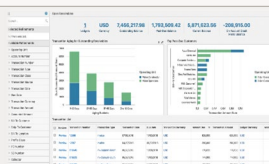
Oracle Assets Command Center

[Implement and Use Online Training](#) | [Implementation Guide](#) | [User Guide](#)



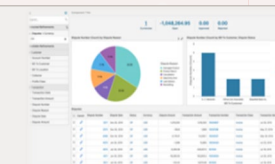
Oracle Receivables Command Center

[What's New](#) | [Implement and Use Online Training](#) | [Implementation Guide](#) | [User Guide](#)



Oracle iReceivables Command Center

[Implement and Use Online Training](#) | [Implementation Guide](#) | [User Guide](#)



Oracle Payables Command Center

[What's New](#) | [Implement and Use Online Training](#) | [Implementation Guide](#) | [User Guide](#)



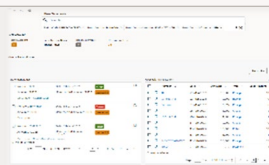
Oracle Employee Expenses Command Center

[Implement and Use Online Training](#) | [Implementation Guide](#) | [User Guide](#)



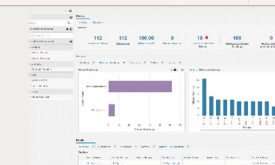
Oracle Cash Management Command Center

[Implement and Use Online Training](#) | [Implementation Guide](#) | [User Guide](#)



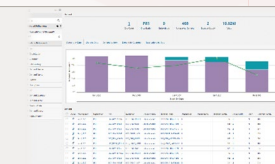
Oracle Lease and Finance Management Command Center

[Implement and Use Online Training](#) | [Implementation Guide](#) | [User Guide](#)



Oracle Inventory Management Command Center

[What's New](#) | [Implement and Use Online Training – Move order](#) | [Supply / Demand](#) | [Electronic Kanban](#) | [Transaction Management](#) | [Period Balances Transaction Processing Exceptions](#) | [Movement Statistics and Exceptions](#) | [Replenishment](#) | [Implementation Guide](#) | [User Guide](#)



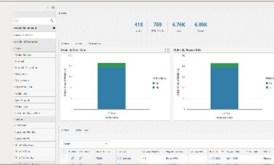
Oracle Enterprise Command Centers (ECC) *16*

Quick Start Guide

Announcement

Oracle Order Management Command Center

[Implement and Use Online Training | Implementation Guide | User Guide](#)



Oracle Enterprise Asset Management Command Center

[Implement and Use Online Training | Implementation Guide | User Guide](#)



Quick Links

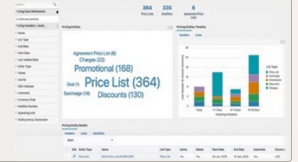
Oracle Channel Revenue Management Command Center

[Implement and Use Online Training | Implementation Guide | User Guide](#)



Oracle Advanced Pricing Command Center

[Implement and Use Online Training | Implementation Guide | User Guide](#)



Oracle Discrete Manufacturing Command Center

[Implement and Use Online Training | Implementation Guide | User Guide](#)



Oracle Process Manufacturing Command Center

[Implement and Use Online Training | Implementation Guide | User Guide](#)



Installation

Oracle Bills of Materials Command Center

[Implement and Use Online Training | Implementation Guide | User Guide](#)



Oracle Outsourced Manufacturing Command Center

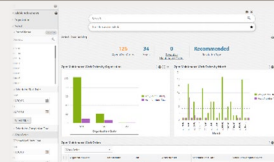
[Implement and Use Online Training | Implementation Guide | User Guide](#)



Documentation

Oracle Cost Management Command Center

[What's New | Implement and Use Online Training | Implementation Guide | User Guide | Process Manufacturing User Guide](#)



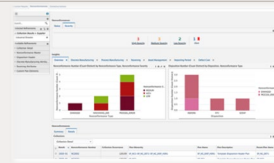
Oracle Project Manufacturing Command Center

[Implement and Use Online Training | Implementation Guide | User Guide](#)



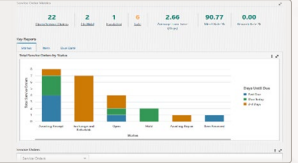
Oracle Quality Command Center

[Implement and Use Online Training | Implementation Guide | User Guide](#)



Oracle Depot Repair Command Center

[Implement and Use Online Training | Implementation Guide | User Guide](#)



Oracle Enterprise Command Centers (ECC) *Quick Start Guide* V16

Announcement

Oracle Asset Tracking Command Center

[Implement and Use Online Training](#) | [Implementation Guide](#) | [User Guide](#)



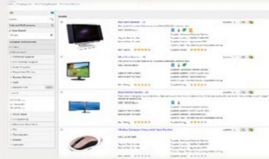
Oracle Landed Cost Management Command Center

[Implement and Use Online Training](#) | [Implementation Guide](#) | [User Guide](#)



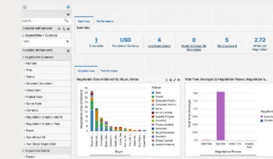
Oracle iProcurement: Consumer-Like Shopping

[Implement and Use Online Training](#) | [Implementation Guide](#) | [User Guide](#)



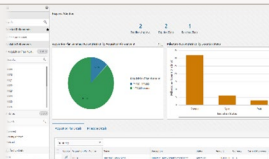
Oracle Procurement Command Center

[Implement and Use Online Training](#) | [Implementation Guide](#) | [User Guide](#)



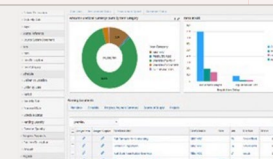
Oracle Contract Lifecycle Management for Public Sector

[Implement and Use Online Training](#) | [Implementation Guide](#) | [iProcurement User Guide](#) | [Purchasing User Guide](#)



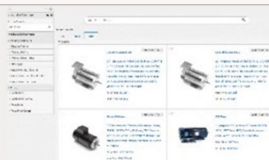
Oracle Project Procurement Command Center

[Implement and Use Online Training](#) | [Implementation Guide](#) | [User Guide](#)



Oracle iStore: Enhanced Product Search

[Implement and Use Online Training](#) | [Implementation Guide](#) | [User Guide](#)



Oracle Incentive Compensation Command Center

[Implement and Use Online Training](#) | [Implementation Guide](#) | [User Guide](#)



Oracle Projects Command Center

[Implement and Use Online Training – Investment Turn Dashboard](#) | [Implement and Use Online Training – G Invoicing \(Federal\)](#) | [Implement and Use Online Training – Billing Dashboard](#) | [Implement and Use Online Training – Transfer Budgets and Year-End Budget](#) | [Implement and Use Online Training – Project Costing](#) | [Implementation Guide](#) | [User Guide](#)



Quick Links

Installation

Documentation

Oracle Enterprise Command Centers (ECC) *Quick Start Guide* V16

Announcement

Quick Links

Installation

Documentation

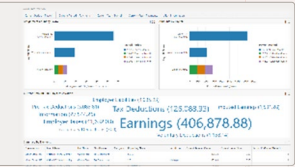
Oracle Human Resources Command Center

[Implement and Use Online Training | Implementation Guide | User Guide](#)



Oracle Payroll Command Center

[Implement and Use Online Training | Implementation Guide | User Guide](#)



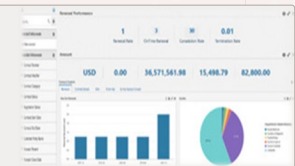
Oracle Lease Contracts Command Center

[Implement and Use Online Training | Implementation Guide | User Guide](#)



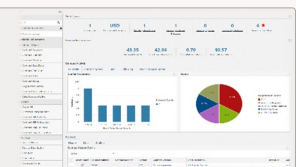
Oracle Service Command Center

[Implement and Use Online Training | Implementation Guide | User Guide](#)



Oracle Service Contracts Command Center

[Implement and Use Online Training | Implementation Guide | User Guide](#)



Oracle Field Service Command Center

[Implement and Use Online Training | Implementation Guide | User Guide](#)

